

5

4

3

2

1

受控 CONTROLLED DOCUMENT

| | | | | | |
|-----------|--------------------------------|-----------|----|------------------|----------|
| 编号 P/N | 40-9809M-CUST (SEE TABLE I) | 版本 Rev | 02 | 日期 Rel'd Date | Jul11,11 |
|-----------|--------------------------------|-----------|----|------------------|----------|

Description: 9 Pin Crimp Type Plug
 Part No: 40-9809M
 Application: 98 Series D-Sub Connector
 Crimp Tool: N/A
 Impedance: N/A
 Frequency Range: N/A
 Material: Shell Steel, Nickel plated
 Insulator PBT+30%Fiber-grass,UL94-V0 Black
 RoHS Compliance: Yes
 Technical Detail: N/A



DRAWING NO.
40-9809M-CUST(SEE TABLE I)

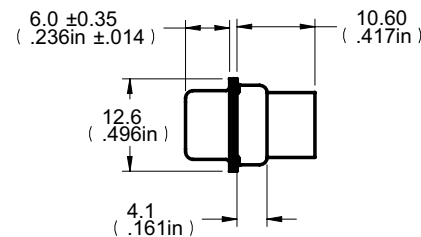
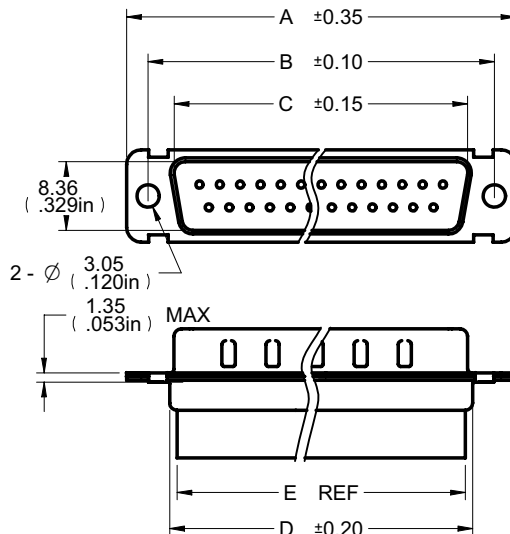
REVISIONS

| | | | | | | |
|----|---|---|---|---|---|---|
| 01 | OFFICIAL RELEASE | | | | | |
| | 11-26-09 | Y | U | Y | T | H |
| 02 | CHANGE SHELL PLATING FROM YELLOW ZINC TO NICKEL | | | | | |
| | 10-15-10 | J | U | Y | T | H |

ECO-10-0166


TABLE I

| Part Number | Description | A (mm) | B (mm) | C (mm) | D (mm) | E (mm) |
|-------------|------------------------|--------|--------|--------|--------|--------|
| 40-9809M | 9 Pin Crimp Type Plug | 30.80 | 24.99 | 16.92 | 19.20 | 15.20 |
| 40-9815M | 15 Pin Crimp Type Plug | 39.15 | 33.32 | 25.25 | 27.70 | 23.70 |
| 40-9825M | 25 Pin Crimp Type Plug | 53.00 | 47.04 | 38.96 | 41.28 | 37.28 |
| 40-9837M | 37 Pin Crimp Type Plug | 69.30 | 63.50 | 55.42 | 57.30 | 53.30 |



DIM OUTLINE

| | | | |
|--------------------------------------|--------|------------------------|------------------|
| TOLERANCE UNLESS OTHERWISE SPECIFIED | | DRAWN BY JEAN.JIN | DATE 10-15-10 |
| DECIMALS | mm | CHECKED BY BETTY.YU | DATE 10-15-10 |
| X | ± 0.5 | APPROVED BY THOMAS | DATE 10-15-10 |
| X.XX | ± 0.2 | U/M | mm |
| ANGLES | ± 0.5° | | |

| | | | |
|--|---|-----------|--|
|  cinch CONNECTIVITY SOLUTIONS a bel group | | | |
| | | | TITLE 9 PIN CRIMP TYPE PLUG (SEE TABLE I) |
| SHEET 1 OF 1 | DRAWING NO. 40-9809M-CUST (SEE TABLE I) | SIZE A | |

THIS DRAWING WAS PRODUCED BY COMPUTER,
DO NOT SCALE DRAWING OR UPDATE MANUALLY.

5

4

3

2

1